



INDEX

DR Series Machine Pin



9 Pin



15 Pin



25 Pin



37 Pin



50 Pin

DP Series Machine Pin



9 Pin



15 Pin



25 Pin



37 Pin



50 Pin

DB Series Machine Pin



9 Pin



15 Pin



25 Pin



37 Pin



50 Pin

HDR Series Machine Pin



15 Pin



26 Pin



44 Pin



62 Pin



78 Pin

HDP Series Machine Pin



15 Pin



26 Pin



44 Pin



62 Pin



78 Pin

HDB Series Machine Pin



15 Pin 26 Pin 44 Pin 62 Pin 78 Pin

COMBO D Series Machine Pin

Power Connector Right Angle



2V2 3W3 7W2 5W5 11W1



13W3 17W2 17W5 21W1 21W4



25W3 27W2 8W8 36W4 13W3/5W5

COMBO D Series Machine Pin

Power Connector Straight



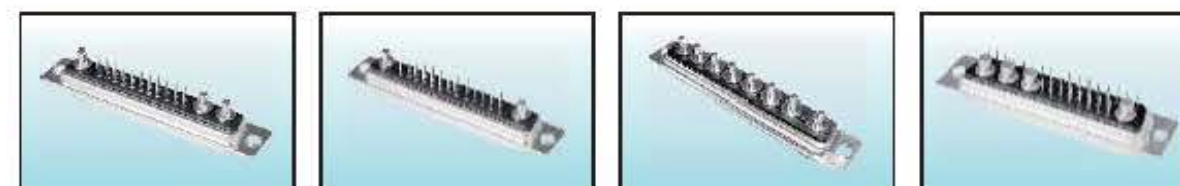
2V2 3W3 7W2 5W5 11W1



13W3 17W2 17W5 21W1 21W4

COMBO D Series Machine Pin

Power Connector Straight



25W3 27W2 8W8 36W4

COMBO D Series Machine Pin

Power Connector Straight



2V2 3W3 7W2 5W5 11W1



13W3 17W2 17W5 21W1 21W4



25W3 27W2 8W8 36W4

D-SUB Dual Port Series Stamped Pin/Machine Pin



9/9 15/15 25/25 37/37 9/HD15



HD15/HD15 HD15/DVI 9/9 Machine Pin 50/50 Machine Pin

Slim D-SUB



9 Pin



25 Pin



HD15 Pin



HD15 Pin

D-SUB High Density & Micro D



HD15 Pin



HD26 Pin



HD15 Pin



HD15 Pin



Micro D 9Pin

D-SUB Hi-rise



9 Pin



25 Pin



HD 15



HD15+2 MINI DIN

D-SUB Mini Gender Changer



DB9M/DB9M



DB9F/DB9F



DB9M/DB9F



HD15F/HD15F



DB25F/DB9M

Note: Due to technical progress, all designs, specifications and components are subject to change without notice.

Welcome your completed inquiry by direct mail or fax

D-subminiature

Right Angle Dip .318"/7.2mm Footprint
Precision machined contacts

Material:

- Insulator: Glass Filled Polyester UL94V-0
- Contacts: Copper Alloy
- Shell: Steel, Tin Plated

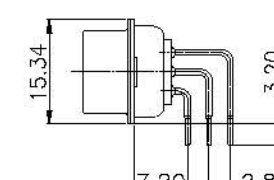
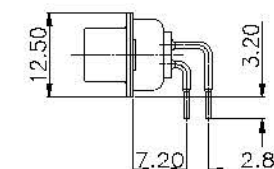
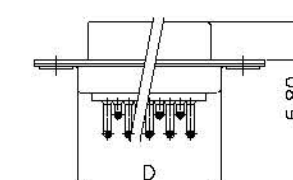
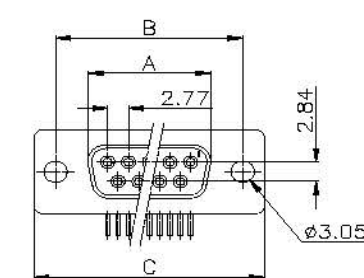
Electrical:

- Rated current and voltage: 5 Amp 250V AC(r.m.s)
- Withstanding Voltage: 1000V AC for 1 minute
- Contact Resistance: <20mΩ
- Insulation Resistance: >5000MΩ
- Operating Temperature: -40℃~+105℃

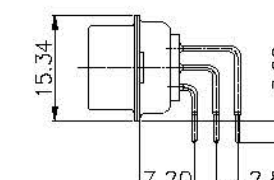
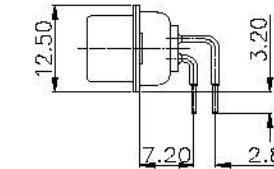
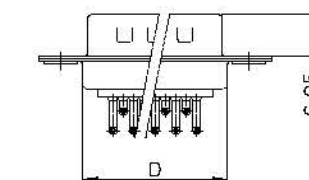
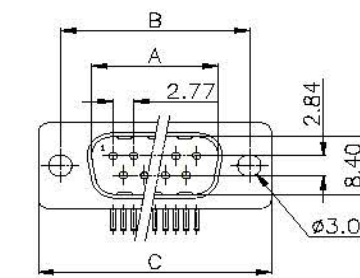


RoHS compliant

SOCKET CONNECTOR



PLUG CONNECTOR



Dimension

| Circuits | A±0.13 | | B±0.25 | C±0.38 | D±0.38 |
|----------|--------|-------|--------|--------|--------|
| | Socket | Plug | | | |
| 9 | 16.33 | 16.92 | 24.99 | 30.81 | 19.28 |
| 15 | 24.66 | 25.25 | 33.32 | 39.14 | 27.51 |
| 25 | 38.38 | 38.96 | 47.04 | 53.04 | 41.28 |
| 37 | 54.84 | 55.42 | 63.50 | 69.32 | 57.71 |
| 50 | 52.20 | 52.80 | 61.00 | 67.20 | 54.98 |

Ordering Code

103 - XX X - X XX - X XX
① ②③ ④⑤ ⑥⑦

1. Series No
2. Contacts: 9, 15, 25, 37, 50
3. Contact type: F(Female), M(Male)
4. Terminal Material:
0: Phosphor Bronze 1: Brass
5. Contacts Plating: Gold Plated

6. Insulator Color: 0: Black 1: White
7. Mating Options:
00: 0.120" Diameter Holes
01: 4-40 Threaded Rivets Clinch Nuts on Back Shell
10: 4-40 Threaded Rivets Clinch Nuts on Front Shell

D-subminiature

Right Angle Dip .318"/7.2mm Footprint
Precision machined contacts-Plastic Bracket



Material:

- Insulator: Glass Filled Polyester UL94V-0
- Contacts: Copper Alloy
- Shell: Stell, Tin Plated

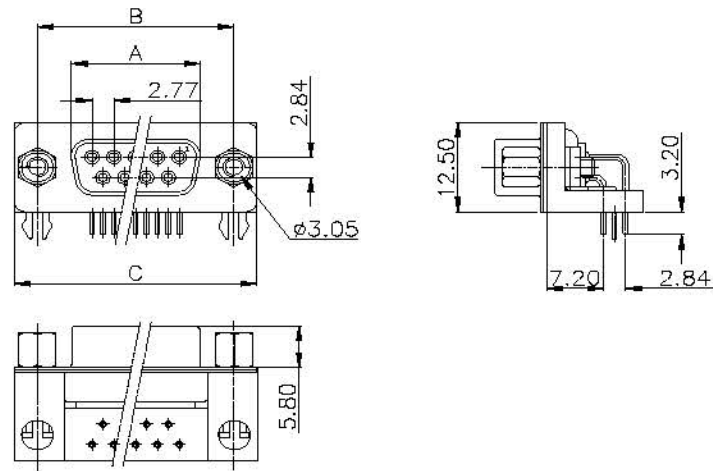
Electrical:

- Rated current and voltage: 5 Amp 250V AC(r.m.s)
- Withstanding Voltage: 1000V AC for 1 minute
- Contact Resistance: <20mΩ
- Insulation Resistance: >5000MΩ
- Operating Temperature: -40℃~+105℃

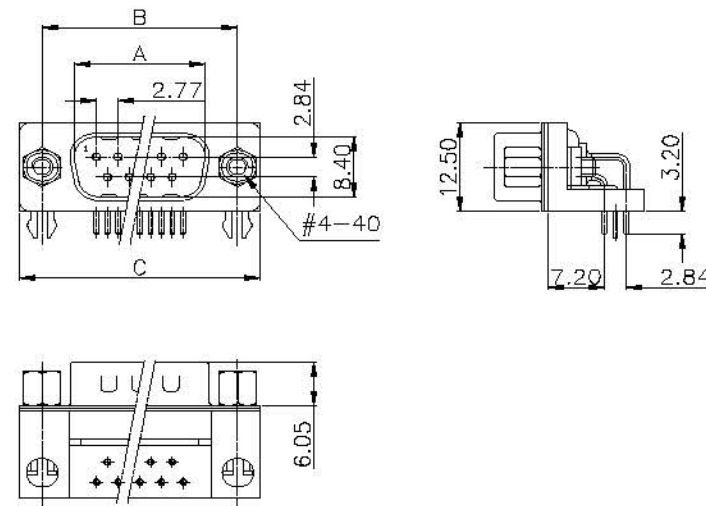


RoHS compliant

SOCKET CONNECTOR



PLUG CONNECTOR



Dimension

| Circuits | Socket | A±0.13 Plug | B±0.25 | C±0.38 |
|----------|--------|----------------|--------|--------|
| 9 | 16.33 | 16.92 | 24.99 | 30.81 |
| 15 | 24.66 | 25.25 | 33.32 | 39.14 |
| 25 | 38.38 | 38.96 | 47.04 | 53.04 |
| 37 | 54.84 | 55.42 | 63.50 | 69.32 |

Ordering Code

103 - XX X - X XX - X XX
① ②③ ④⑤ ⑥⑦

- Series No
- Contacts: 9, 15, 25, 37
- Contact type: F(Female), M(Male)
- Terminal Material:
0: Phosphor Bronze 1: Brass
- Contacts Plating: Gold Plated

- Insulator Color: 0: Black 1: White
- Mating Options:
00: 0.120"Diameter Holes
01: 4-40Threaded Rivets Clinch Nuts on Back Shell
10: 4-40Threaded Rivets Clinch Nuts on Front Shell
14: 4-40Threaded Rivets Plastic Bracket

D-subminiature

Right Angle Dip .318"/7.2mm Footprint
Precision machined contacts-Metal Bracket



Material:

- Insulator: Glass Filled Polyester UL94V-0
- Contacts: Copper Alloy
- Shell: Stell, Tin Plated

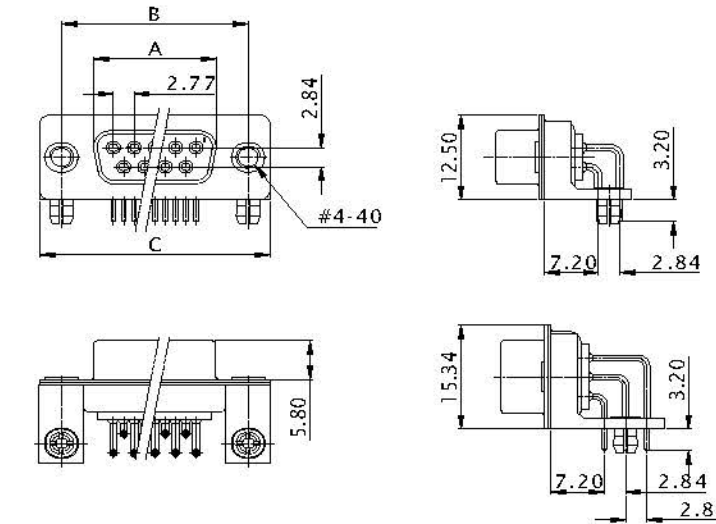
Electrical:

- Rated current and voltage: 5 Amp 250V AC(r.m.s)
- Withstanding Voltage: 1000V AC for 1 minute
- Contact Resistance: <20mΩ
- Insulation Resistance: >5000MΩ
- Operating Temperature: -40℃~+105℃

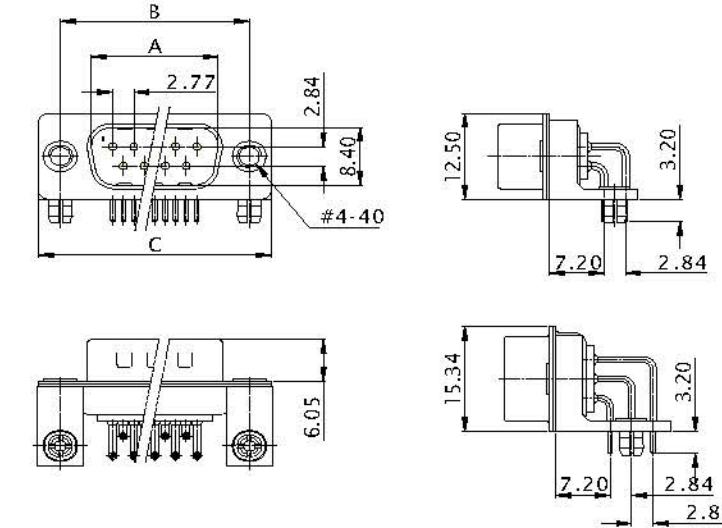


RoHS compliant

SOCKET CONNECTOR



PLUG CONNECTOR



Dimension

| Circuits | Socket | A±0.13 Plug | B±0.25 | C±0.38 |
|----------|--------|----------------|--------|--------|
| 9 | 16.33 | 16.92 | 24.99 | 30.81 |
| 15 | 24.66 | 25.25 | 33.32 | 39.14 |
| 25 | 38.38 | 38.96 | 47.04 | 53.04 |
| 37 | 54.84 | 55.42 | 63.50 | 69.32 |
| 50 | 52.20 | 52.80 | 61.00 | 67.20 |

Ordering Code

103 - XX X - X XX - X XX
① ②③ ④⑤ ⑥⑦

- Series No
- Contacts: 9, 15, 25, 37, 50
- Contact type: F(Female), M(Male)
- Terminal Material:
0: Phosphor Bronze 1: Brass
- Contacts Plating: Gold Plated

- Insulator Color: 0: Black 1: White
- Mating Options:
00: 0.120"Diameter Holes
01: 4-40Threaded Rivets Clinch Nuts on Back Shell
10: 4-40Threaded Rivets Clinch Nuts on Front Shell
14: 4-40Threaded Rivets Plastic Bracket

D-subminiature
Right Angle Dip .370"/9.4mm Footprint
Precision machined contacts

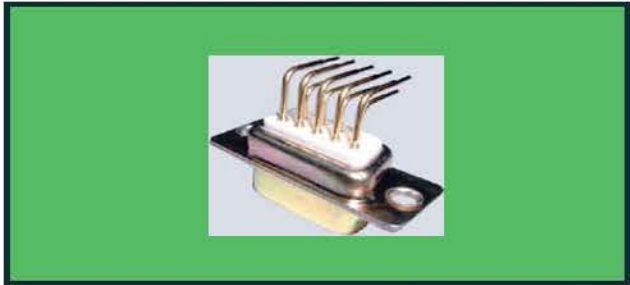


Material:

- Insulator: Glass Filled Polyester UL94V-0
- Contacts: Copper Alloy
- Shell: Stell, Tin Plated

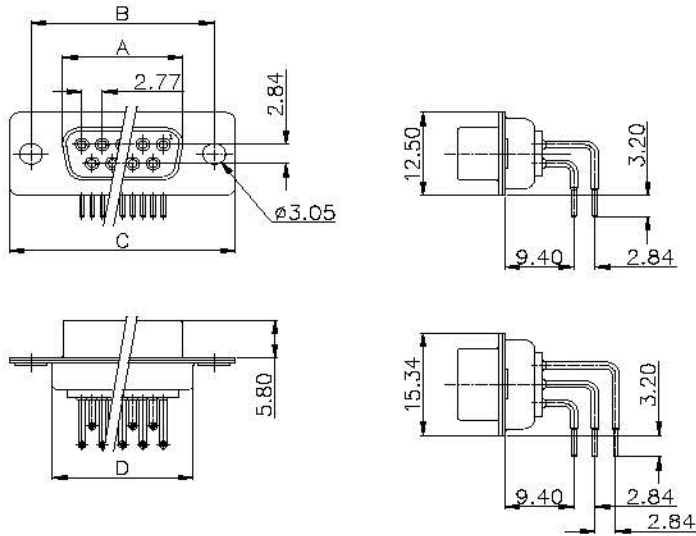
Electrical:

- Rated current and voltage: 5 Amp 250V AC(r.m.s)
- Withstanding Voltage: 1000V AC for 1 minute
- Contact Resistance: <20mΩ
- Insulation Resistance: >5000MΩ
- Operating Temperature: -40℃~+105℃

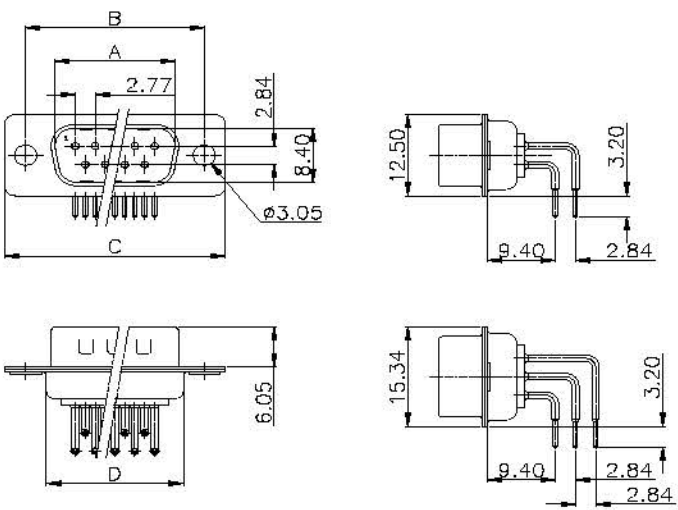


RoHS compliant

SOCKET CONNECTOR



PLUG CONNECTOR



Dimension

| Circuits | A±0.13 | | B±0.25 | C±0.38 | D±0.38 |
|----------|--------|-------|--------|--------|--------|
| | Socket | Plug | | | |
| 9 | 16.33 | 16.92 | 24.99 | 30.81 | 19.28 |
| 15 | 24.66 | 25.25 | 33.32 | 39.14 | 27.51 |
| 25 | 38.38 | 38.96 | 47.04 | 53.04 | 41.28 |
| 37 | 54.84 | 55.42 | 63.50 | 69.32 | 57.71 |
| 50 | 52.20 | 52.80 | 61.00 | 67.20 | 54.98 |

Ordering Code

106 - XX X - X XX - X XX
① ②③ ④⑤ ⑥⑦

- Series No
- Contacts: 9, 15, 25, 37, 50
- Contact type: F(Female), M(Male)
- Terminal Material:
0: Phosphor Bronze 1: Brass
- Contacts Plating: Gold Plated

- Insulator Color: 0: Black 1: White
- Mating Options:
00: 0.120"Diameter Holes
01: 4-40Threaded Rivets Clinch Nuts on Back Shell
10: 4-40Threaded Rivets Clinch Nuts on Front Shell

D-subminiature
Right Angle Dip .318"/7.2mm Footprint
Precision machined contacts-Plastic Bracket



Material:

- Insulator: Glass Filled Polyester UL94V-0
- Contacts: Copper Alloy
- Shell: Stell, Tin Plated

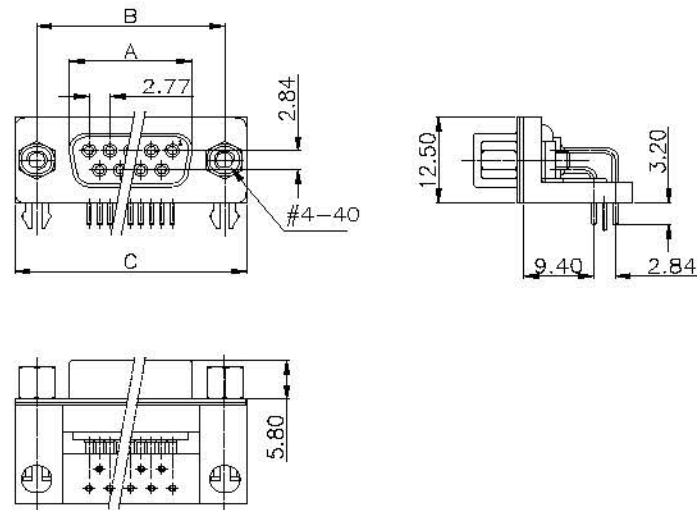
Electrical:

- Rated current and voltage: 5 Amp 250V AC(r.m.s)
- Withstanding Voltage: 1000V AC for 1 minute
- Contact Resistance: <20mΩ
- Insulation Resistance: >5000MΩ
- Operating Temperature: -40℃~+105℃

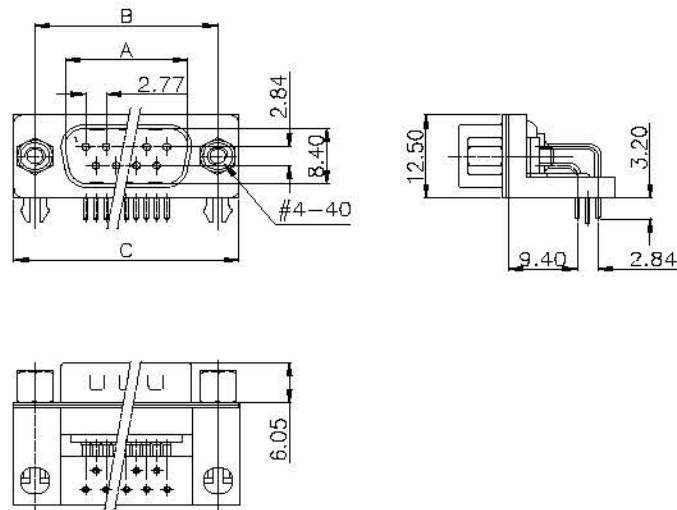


RoHS compliant

SOCKET CONNECTOR



PLUG CONNECTOR



Dimension

| Circuits | A±0.13 | | B±0.25 | C±0.38 |
|----------|--------|-------|--------|--------|
| | Socket | Plug | | |
| 9 | 16.33 | 16.92 | 24.99 | 30.81 |
| 15 | 24.66 | 25.25 | 33.32 | 39.14 |
| 25 | 38.38 | 38.96 | 47.04 | 53.04 |
| 37 | 54.84 | 55.42 | 63.50 | 69.32 |
| 50 | 52.20 | 52.80 | 61.00 | 67.20 |

Ordering Code

103 - XX X - X XX - X XX
① ②③ ④⑤ ⑥⑦

- Series No
- Contacts: 9, 15, 25, 37, 50
- Contact type: F(Female), M(Male)
- Terminal Material:
0: Phosphor Bronze 1: Brass
- Contacts Plating: Gold Plated

- Insulator Color: 0: Black 1: White
- Mating Options:
00: 0.120"Diameter Holes
01: 4-40Threaded Rivets Clinch Nuts on Back Shell
10: 4-40Threaded Rivets Clinch Nuts on Front Shell
14: 4-40Threaded Rivets Plastic Bracket

D-subminiature
Right Angle Dip .318"/7.2mm Footprint
Precision machined contacts-Metal Bracket



- Material:
- Insulator: Glass Filled Polyester UL94V-0
 - Contacts: Copper Alloy
 - Shell: Stell, Tin Plated

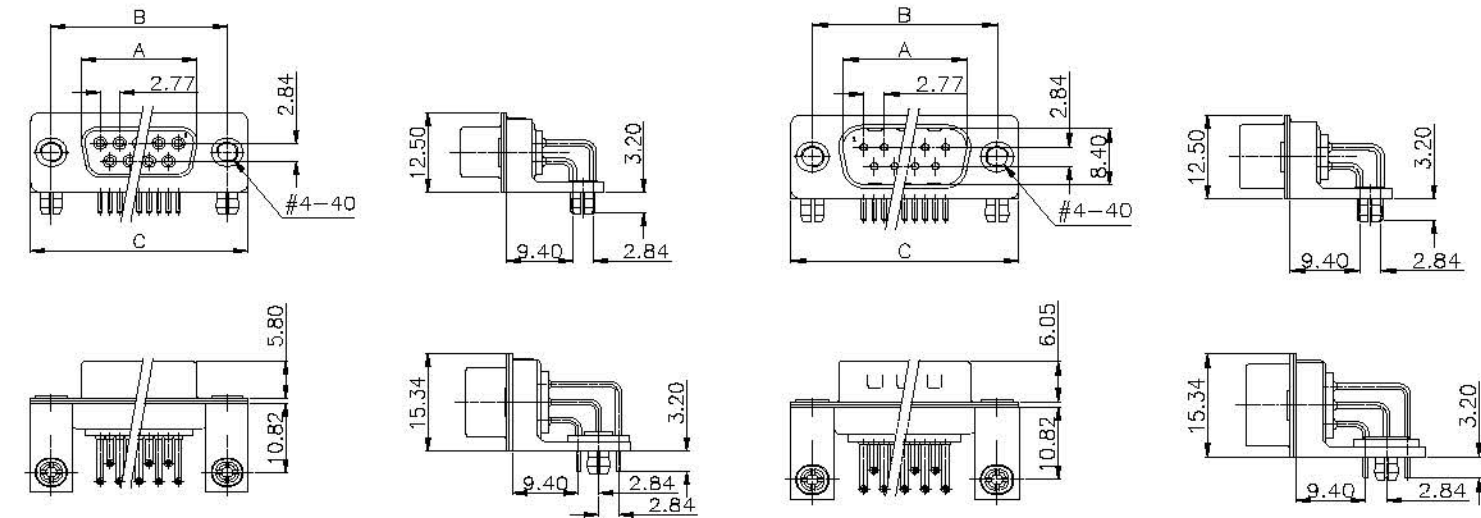
- Electrical:
- Rated current and voltage: 5 Amp 250V AC(r.m.s)
 - Withstanding Voltage: 1000V AC for 1 minute
 - Contact Resistance: <20mΩ
 - Insulation Resistance: >5000MΩ
 - Operating Temperature: -40℃~+105℃



RoHS compliant

SOCKET CONNECTOR

PLUG CONNECTOR



Dimension

| Circuits | A±0.13 | | B±0.25 | C±0.38 |
|----------|--------|-------|--------|--------|
| | Socket | Plug | | |
| 9 | 16.33 | 16.92 | 24.99 | 30.81 |
| 15 | 24.66 | 25.25 | 33.32 | 39.14 |
| 25 | 38.38 | 38.96 | 47.04 | 53.04 |
| 37 | 54.84 | 55.42 | 63.50 | 69.32 |
| 50 | 52.20 | 52.80 | 61.00 | 67.20 |

Ordering Code

106 - XX X - X XX - X XX
① ②③ ④⑤ ⑥⑦

1. Series No

2. Contacts: 9, 15, 25, 37, 50

3. Contact type: F(Female), M(Male)

4. Terminal Material:

0: Phosphor Bronze 1: Brass

5. Contacts Plating: Gold Plated
6. Insulator Color: 0: Black 1: White

7. Mating Options:

00: 0.120"Diameter Holes

01: 4-40Threaded Rivets Clinch Nuts on Back Shell

10: 4-40Threaded Rivets Clinch Nuts on Front Shell

14: 4-40Threaded Rivets Plastic Bracket

D-subminiature
Right Angle High Density Dip .350"/8.89mm Footprint
Precision machined contacts



- Material:
- Insulator: Glass Filled Polyester UL94V-0
 - Contacts: Copper Alloy
 - Shell: Stell, Tin Plated

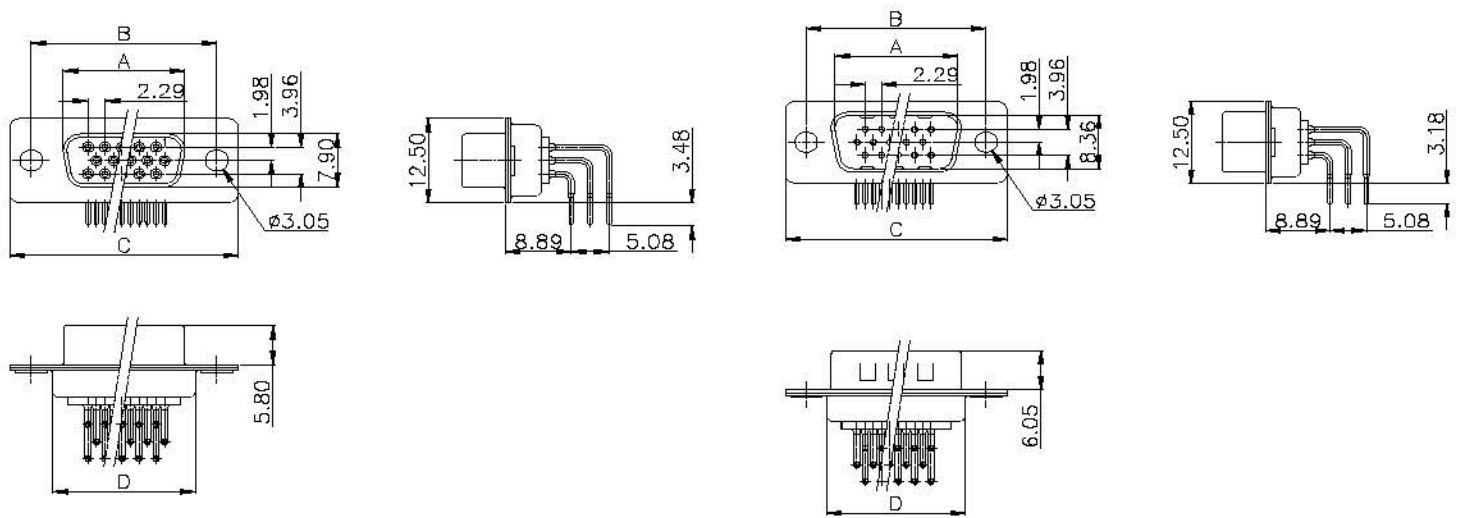
- Electrical:
- Rated current and voltage: 5 Amp 250V AC(r.m.s)
 - Withstanding Voltage: 1000V AC for 1 minute
 - Contact Resistance: <20mΩ
 - Insulation Resistance: >5000MΩ
 - Operating Temperature: -40℃~+105℃



RoHS compliant

SOCKET CONNECTOR

PLUG CONNECTOR



Dimension

| Circuits | A±0.13 | | B±0.25 | C±0.38 | D±0.38 |
|----------|--------|-------|--------|--------|--------|
| | Socket | Plug | | | |
| 15 | 16.33 | 16.33 | 24.99 | 30.81 | 19.28 |
| 26 | 24.66 | 24.99 | 33.32 | 39.14 | 27.51 |
| 44 | 38.38 | 38.38 | 47.04 | 53.04 | 41.28 |

Ordering Code

112 - XX X - X XX - X XX
① ②③ ④⑤ ⑥⑦

1. Series No

2. Contacts: 15, 26, 44

3. Contact type: F(Female), M(Male)

4. Terminal Material:

0: Phosphor Bronze 1: Brass

5. Contacts Plating: Gold Plated
6. Insulator Color: 0: Black 1: White

7. Mating Options:

00: 0.120"Diameter Holes

01: 4-40Threaded Rivets Clinch Nuts on Back Shell

10: 4-40Threaded Rivets Clinch Nuts on Front Shell